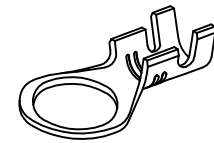
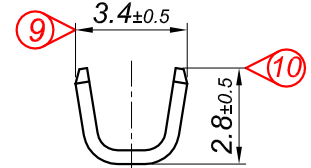
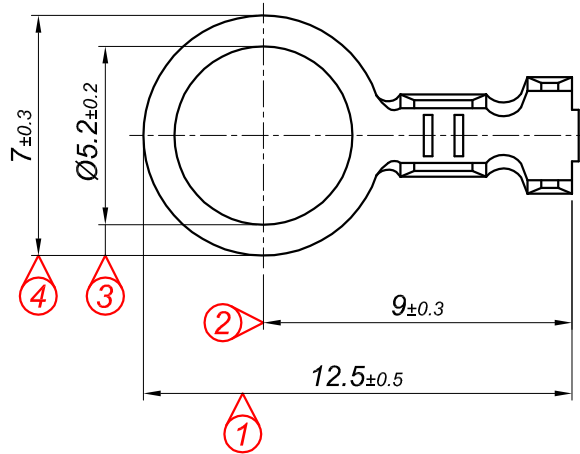
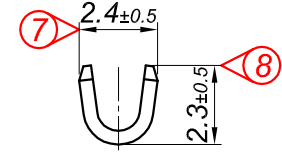
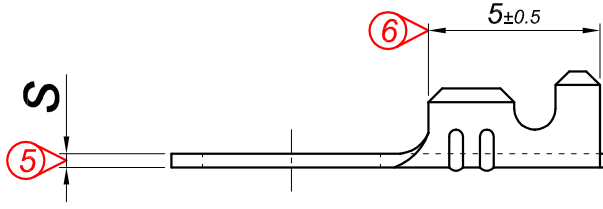


Bu Resim MESA OTO ELEKTRİK LTD.ŞTİ'nin malıdır. Şirket Yetkililerinin izni olmaksızın kopya edilemez, üzerinde değişiklik yapılamaz.
This image MESA AUTO ELECTRIC LTD 's are property. Can not be copied without the consent of the company authorized, any changes can be made.

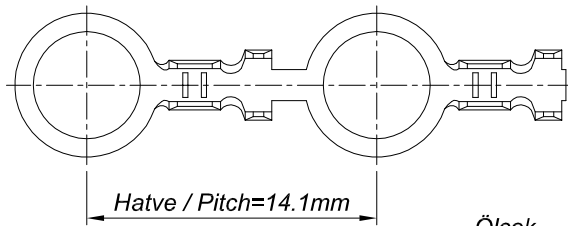
PARÇA KODU PART CODE	PARÇA ADI PART NAME	s ÖLÇÜSÜ (KALINLIK) s MEASURE (THICKNESS)	Malzeme Material	Kaplama Coating
TŞ 2475.40 DP	1 NO KABLO UÇ K.A. Ø5.2 =DP=	0.40±0.05	(CuZn30) Pirinç / Brass	_____
TŞ 2475.40 RP	1 NO KABLO UÇ K.A. Ø5.2 =RP=	0.40±0.05	(CuZn30) Pirinç / Brass	_____
TŞ 2475.40 RPK	1 NO KABLO UÇ K.A. Ø5.2 =RPK=	0.40±0.05	(CuZn30) Pirinç / Brass	Kalay / Sn (3-5µ)
TŞ 2475.50 DP	1 NO KABLO UÇ K.A. Ø5.2 =DP=	0.50±0.05	(CuZn30) Pirinç / Brass	_____
TŞ 2475.50 RP	1 NO KABLO UÇ K.A. Ø5.2 =RP=	0.50±0.05	(CuZn30) Pirinç / Brass	_____
TŞ 2475.50 RPK	1 NO KABLO UÇ K.A. Ø5.2 =RPK=	0.50±0.05	(CuZn30) Pirinç / Brass	Kalay / Sn (3-5µ)
TŞ 2475.50 RÇN	1 NO KABLO UÇ K.A. Ø5.2 =RÇN=	0.50±0.05	Nikel kaplı çelik / Nickel plated Steel	Nikel / Ni (≥1.5µ)



Perspektif
Perspective

Kalıp çıkış yönü
Mold output direction

Makara açılım yönü
Reel opening direction




Hatve / Pitch=14.1mm

Ölçek
Scale : 3 / 1

Kablo Kesiti

Wire Section : 0.25 - 0.50 mm²

Resim üzerinden ölçü almayınız
do not measure on drawing

Tarih / Date	18.12.2014	İmza /Signature	Ölçek /Scale		
Çizen / Desing	M.Yağcı				
Onay / Approval	S.Gölcük		5 / 1	No	Değişiklik / Revision
					Tarih/Date
	Parça Adı: Part Name	1 NO KABLO UÇ KÜÇÜK AYAK Ø5.2		Parça Kodu: Part Code	TŞ 2475